



A Project By

Ameer Hamza
Builders & Developers

Project Architect



Official Sales Partner



Visualized By



www.nextresidencemarketing.com

Office # 607, Ashrafi Heights, Main Market, Gulberg 2, Lahore, Punjab, Pakistan

Phone Number: +92 333 9533 333 | Email: infor@nextresidencemarketing.com



LUXURY LIVING
IN THE HEART OF THE CITY

KARACHI

THE COMMERCIAL CENTER

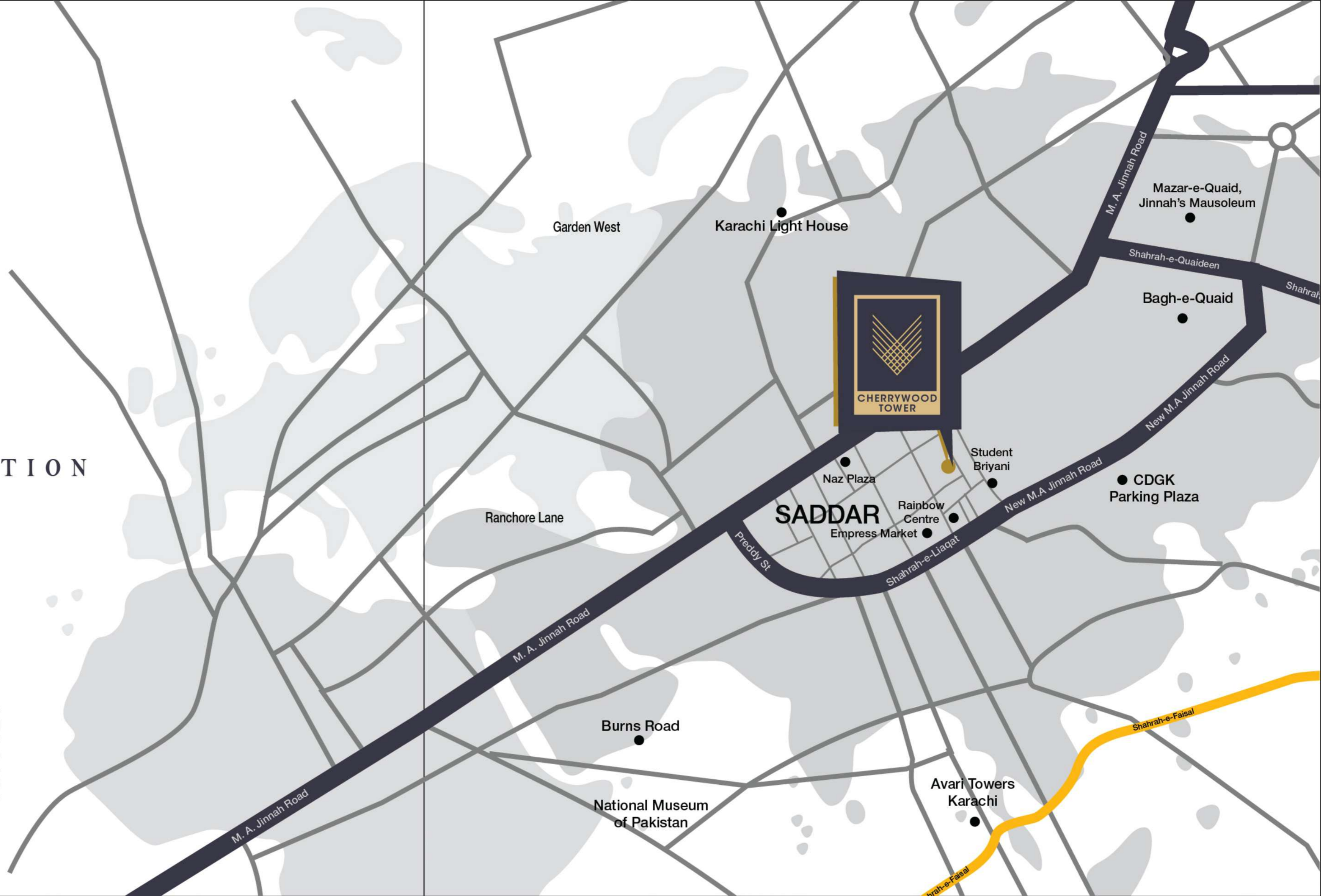
Karachi, the commercial center of Pakistan is a land of opportunities for many. Having a home in a prime locality like Saddar, that has convenient access to everything from medical centers, top-class schools, and colleges to all the necessities of life, is a dream for many. Businesses are sure to flourish in a place like Saddar, the oldest commercial center of Karachi, that serves as a goldmine for the business community.



SADDAR

AN ENVIABLE LOCATION

When you visit Saddar, you are truly mesmerized by the Victorian-style historic buildings and the old city abuzz with business centers and some of the oldest markets. The Cherrywood Tower is strategically located at the center of the city in the commercial hub of Karachi. With its prime location, it has convenient access to all major locations of the city such as M.A Jinnah Road, Clifton, Mazar-e-Quaid, and Karachi Cantt. In close proximity with some important places like Dow University, Passport Office, Army Public School & College, Karachi Zoo, National Museum of Pakistan, and Atrium Mall just to name a few, Cherrywood Tower is the ideal place for residence and business.





CHERRYWOOD TOWER

MODERN LUXURY AT
THE CENTER OF THE CITY

Elegantly styled, presenting one of the best architectural designs, Cherrywood Tower is the perfect combination of sophistication and convenience. A residential project that comes with the ground floor of double-height shops, Cherrywood Tower offers great investment opportunities to both businessmen and home buyers.



THE WINNING TEAM

A team of highly skilled experts have joined hands to make Cherrywood Tower a success.

A Project By

Ameer Hamza Builders & Developers

A renowned name in the construction industry, Ameer Hamza Builders and Developers is the mastermind behind this project.

Official Sales Partner



Project Architect



The state-of-the-art architecture of Cherrywood Tower is testimony of the expertise of the team at Combined Associates.

Structure Engineer



Structure engineers at Impact have ensured that the highest standards of construction are maintained at Cherrywood Tower.

Plumbing Engineer



The plumbing engineers at Nadeem Associates have ensured that only top-quality fixtures are installed to prevent any seepage and plumbing issues.

Electrical Engineer



Hi-Tech Engineering company, a renowned name in electrical engineering has taken care of the wiring and electric installations at Cherrywood Tower making sure that all electric systems are completely shock proof.



A pioneer in the environmental consultancy, EMC Pakistan has ensured that all international standards of health, safety and environment (HSE) are met at Cherrywood Tower.

Visualized By



One of the best architectural visualization companies in Pakistan, Pixarch has closely captured how life will be like at Cherrywood Tower.



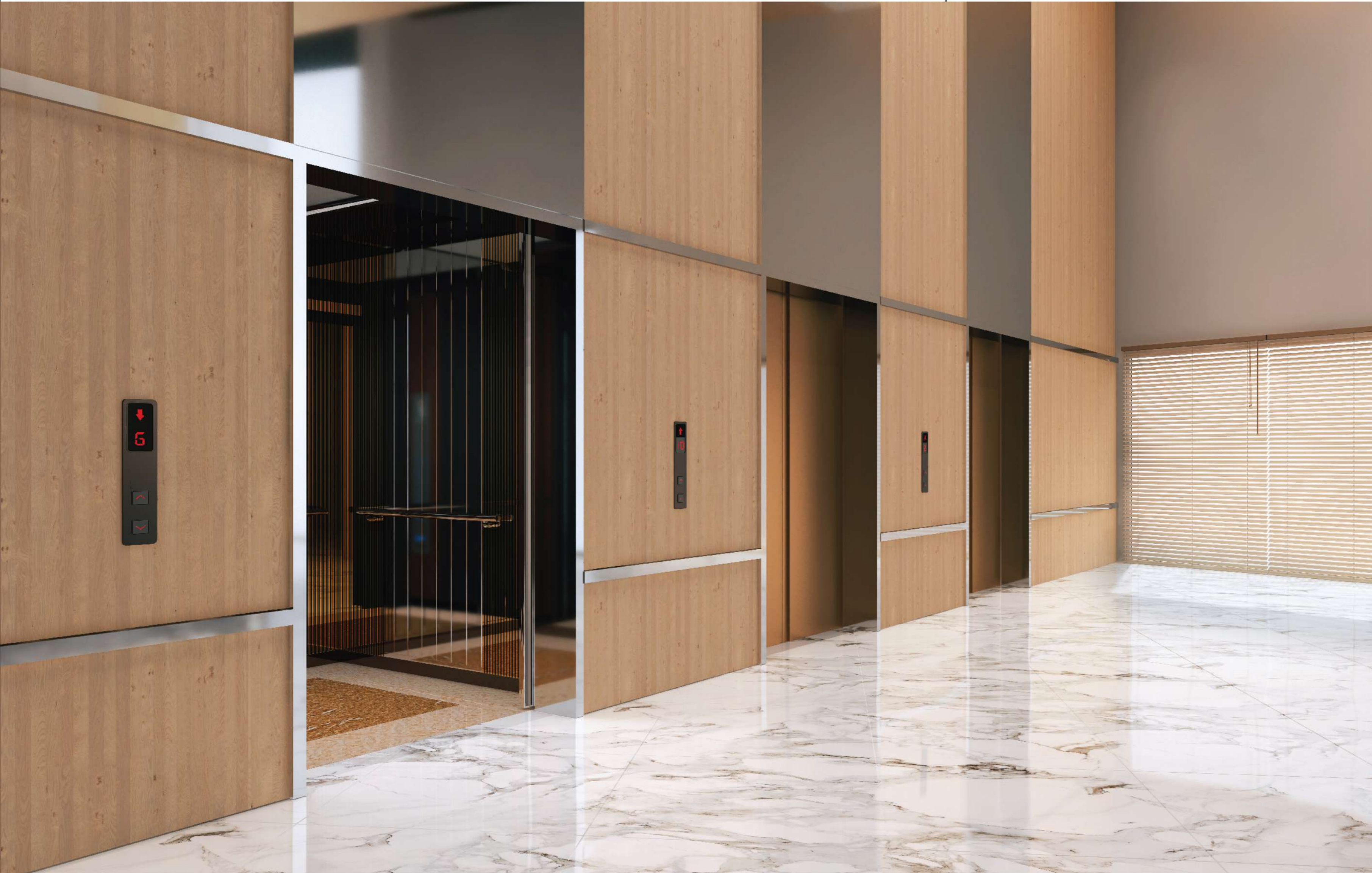
IT'S TIME
TO MAKE LIFE BETTER



YOUR GATEWAY TO HAPPINESS

A grand lobby awaits to welcome you! Glamorous and modern,
exuding luxury and finesse - the stylish entrance is sure to dazzle you!





IMPRESSIVE LIFT LOBBY

Impeccably stylish, the lift lobby has a number of hi-speed lifts ready to transport you to your desired floor in a jiffy.

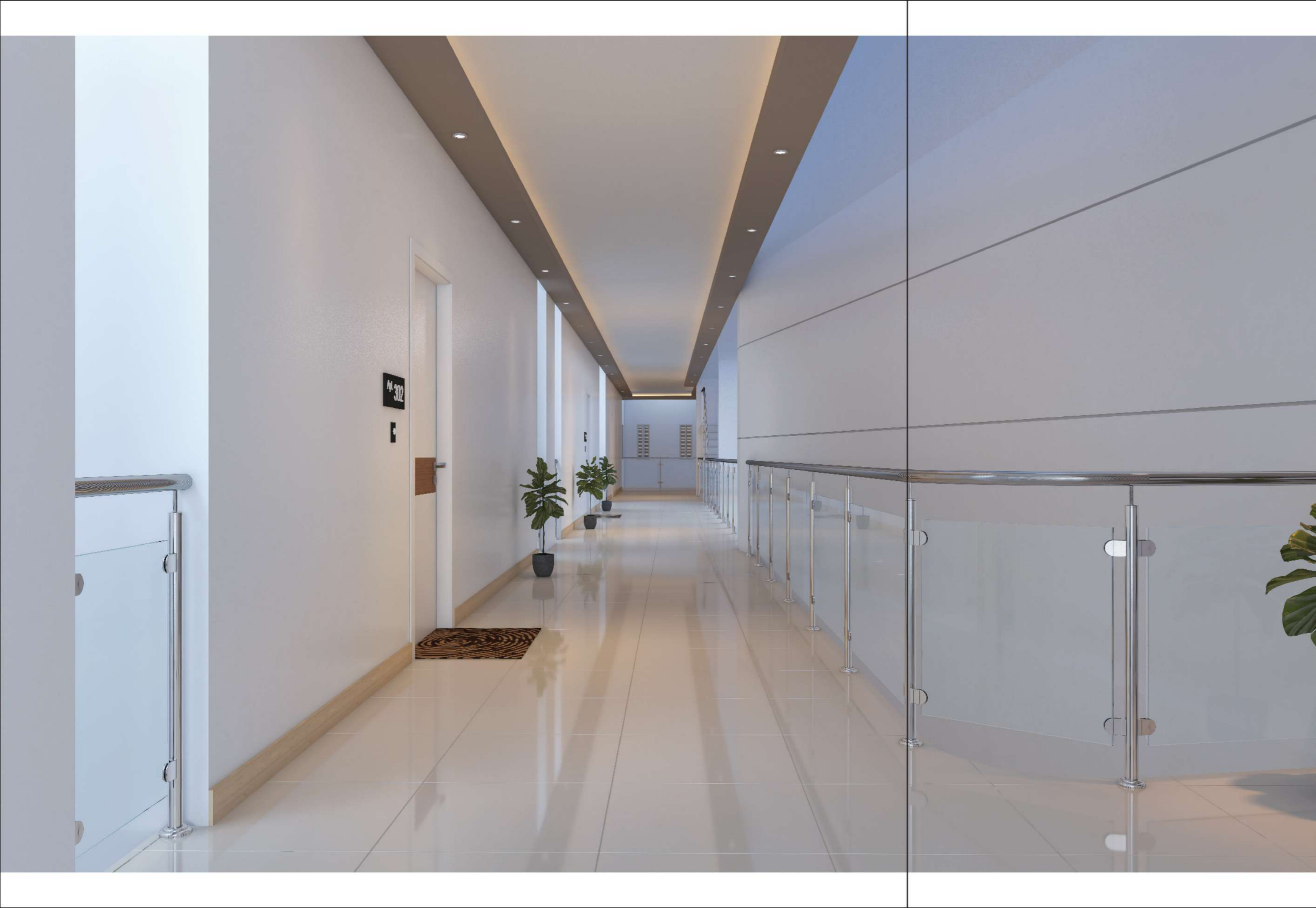




YOUR VIEW OF THE WORLD

The lounge opens into a balcony that gives you a striking view of the busy city life. Rejuvenate your mind and body as you breathe in the refreshing evening air.





WIDE HALLWAYS

Wide corridors are a significant feature of Cherrywood Tower. These passageways ensure that your the stride to your apartment is smooth and effortless.



COMFORT BEYOND IMAGINATION

Enter a spacious lounge as you turn the keys of your luxury apartment.
This large room with full-length windows, serves as the perfect place
to relax with your family.





EXCLUSIVE MASTER BEDROOM

Elegantly designed Master bedroom is luxurious and spacious. The room is well-ventilated, making it perfect for a good night's rest.



STYLISH MODERN BATHROOM

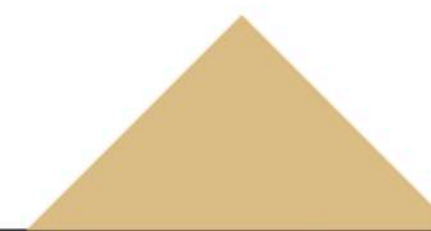
A spacious bathroom that comes with high quality luxurious fixtures and modern design exhibit unmatched class and sophistication.





WARM WELCOME

Welcome your guests in the elegant Drawing room and let them be awed by your graciousness.





CHERRYWOOD TOWER

LIVING BETTER

CHERRYWOOD TOWER

angler
CAMBRIDGE
ARDA
Reebok
Bareez



BE A SHOP OWNER
AND GROW YOUR BUSINESS



GRAND SHOPS A SMART INVESTMENT CHOICE!

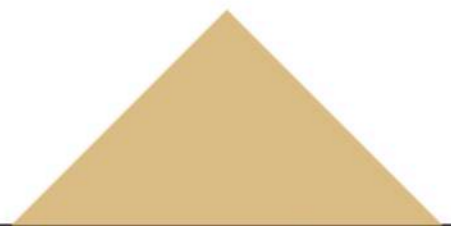
Enjoying a prime location, Saddar, which is also dubbed as the commercial hub of Karachi, the project is a haven for investors. Double-height shops are located on the ground floor giving ample business opportunities to shopkeepers. With a guaranteed footfall, businessmen can double their profits in no time!





WIDE SHOPPING CORRIDORS

Spacious walkways lined with classy shops on both sides is a characteristic feature of the project.





WELL-SUITED FOR EXPENSIVE BRANDS

The shops are exclusively designed for high-end brands and luxury items. Spacious shops allow easy display of the products so that customers have a one-of-a-kind experience at the mall.





CHERRYWOOD
TOWER
YOUR DREAM RESIDENCE



CITY OUTSIDE
TRANQUILITY INSIDE



24hrs security surveillance



PERFECTLY SECURE

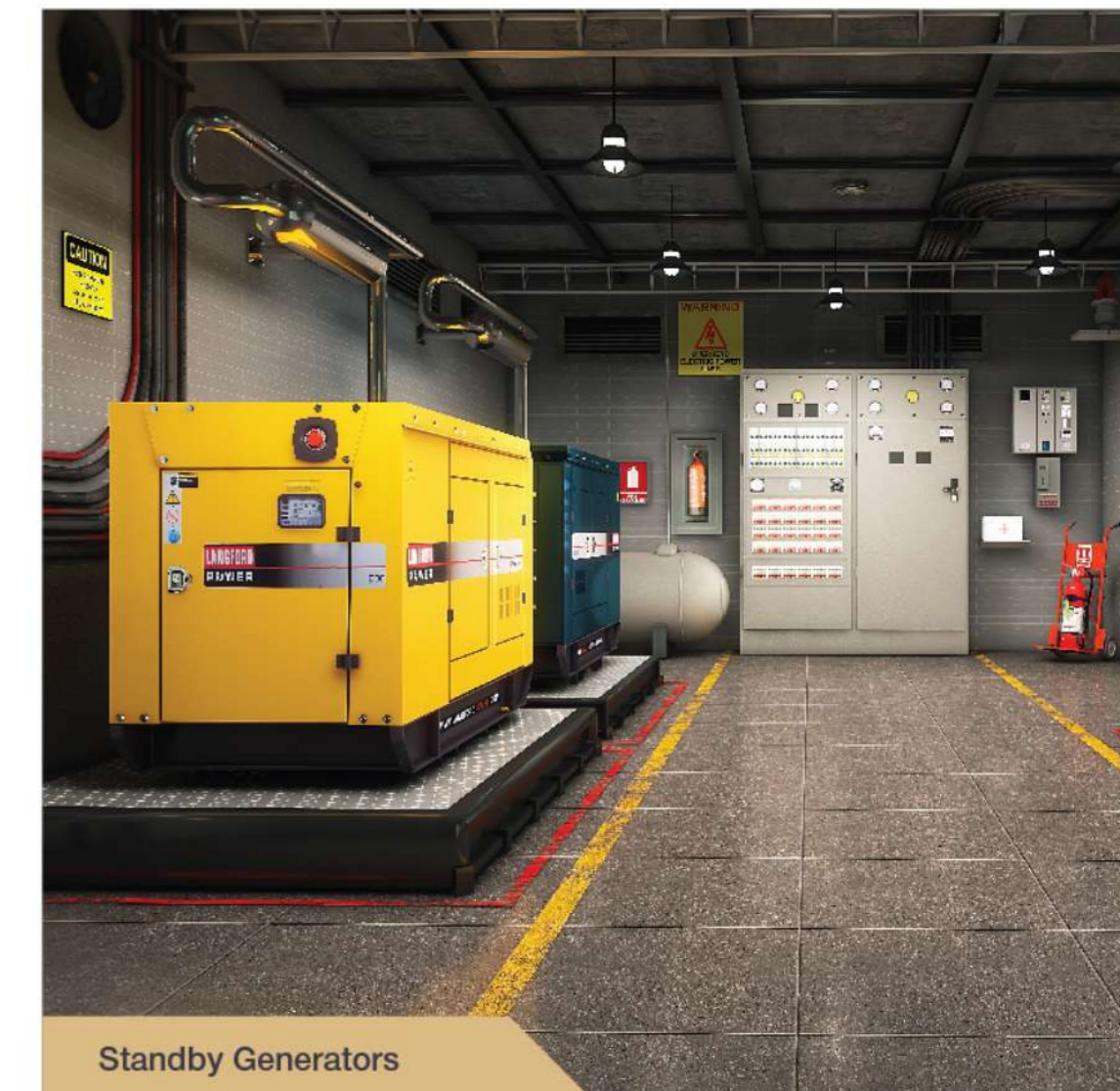
Find a suitable spot for your vehicle in the expansive and secure parking area. With the best facilities available such as CCTV cameras and efficient fire fighting equipment, your vehicles are 100% safe from theft or any untoward incident.



Parking Area



Roof Top Garden, BBQ Area, Gazebo and Jogging Track



Standby Generators



Equipped with NFPA Certified Fire Fighting system

GROUND FLOOR PLAN



TYPICAL FLOOR PLAN



- Type A 3 Bedrooms Drawing Lounge
- Type B 2 Bedrooms Drawing Lounge
- Type C 2 Bedrooms Lounge



3 BEDROOMS

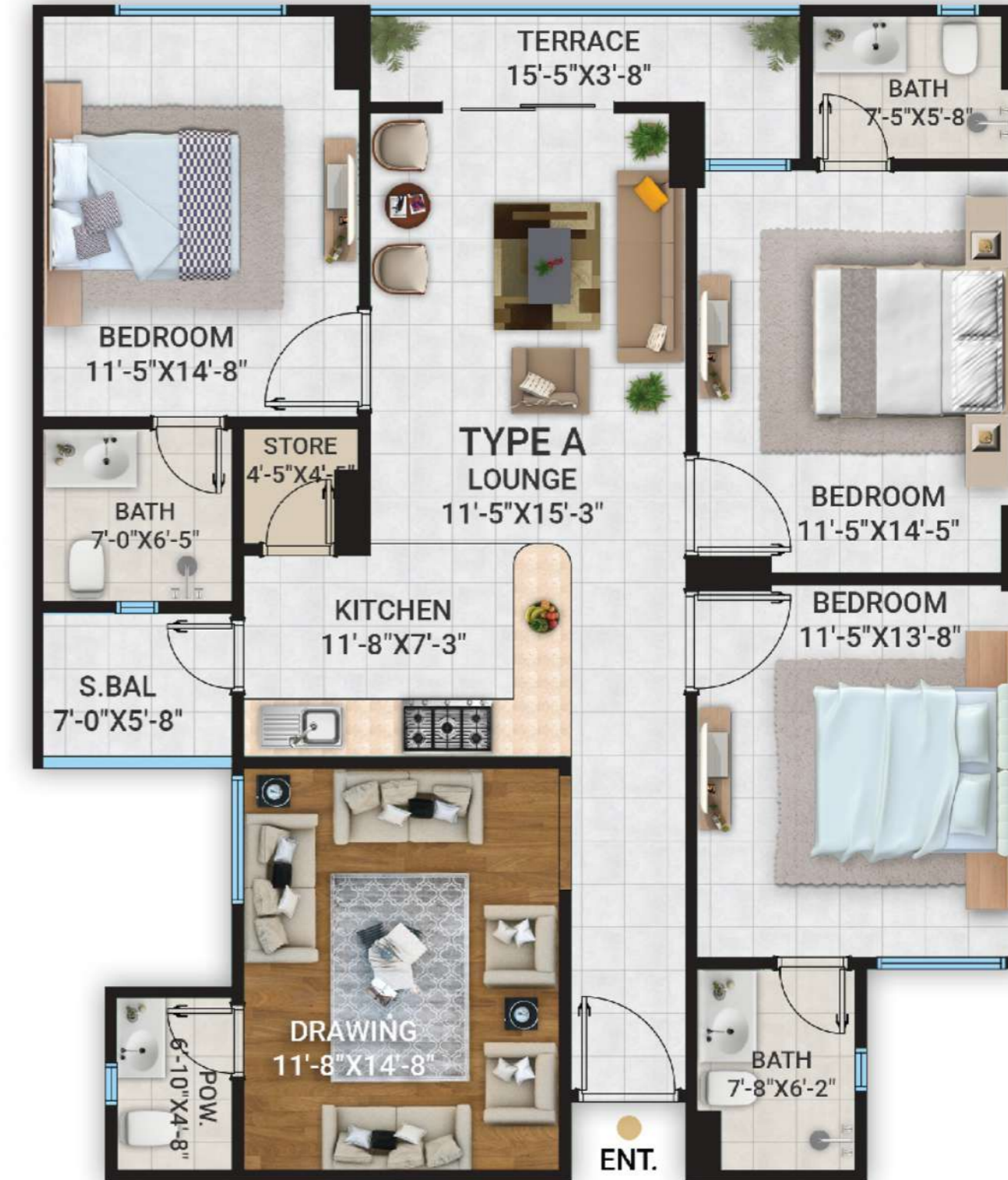
APARTMENT TYPE - A

ISOMETRIC VIEWS



3 BEDROOMS

APARTMENT TYPE - A

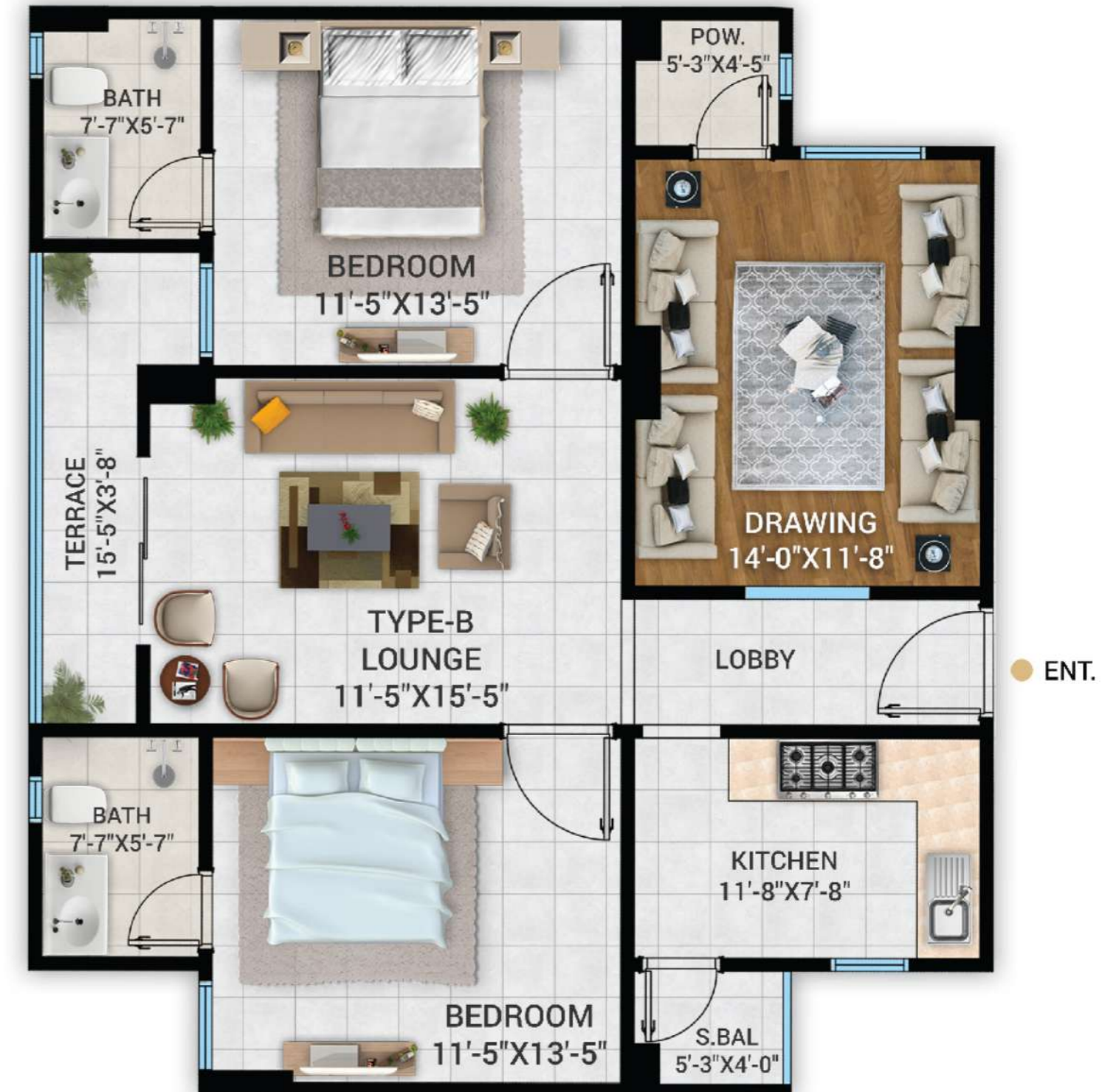


1,656 SQFT TO 1,752 SQFT

2 BEDROOMS
APARTMENT TYPE - B
 ISOMETRIC VIEWS



2 BEDROOMS
APARTMENT TYPE - B

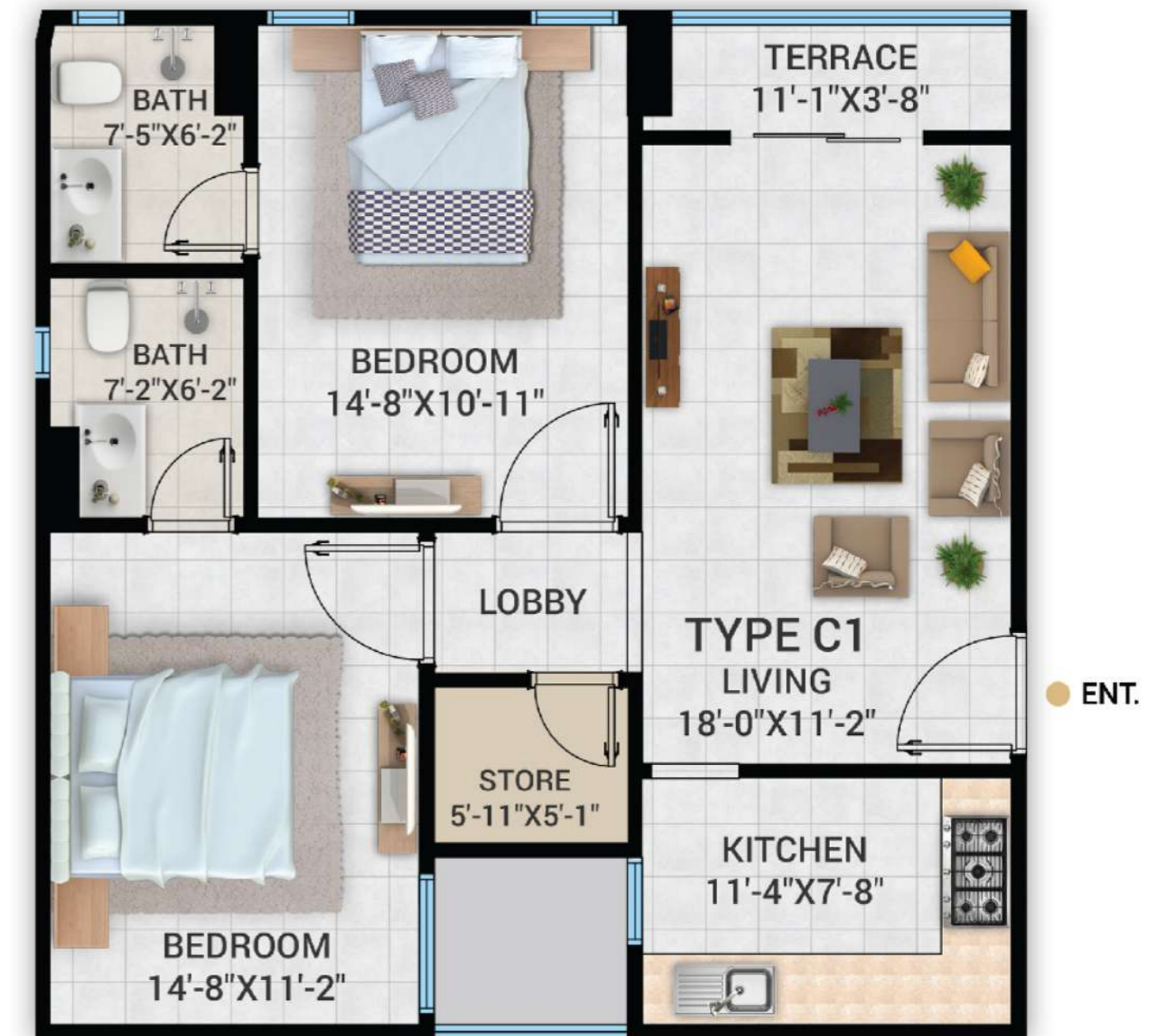


1,248 SQFT TO 1,328 SQFT

2 BEDROOMS
APARTMENT TYPE - C
 ISOMETRIC VIEWS



2 BEDROOMS
APARTMENT TYPE - C



916 SQFT TO 1,016 SQFT



NOCs & APPROVALS

Directorate of Map Publication Survey of Pakistan (NOC)

Civil Aviation Authority (NOC)

Karachi Cantonment Board (NOC)

Pakistan Air force (PAF) NOC for Construction of Building

SSGC (NOC)

Karachi Water & Sewerage Board (NOC)

KE (NOC)

Sindh Environmental Protection Agency Government of Sindh (NOC)



CHERRYWOOD TOWER

A Project of
Ameer Hamza Builders & Developers

ABOUT THE BUILDER

A team of passionate individuals with an aim to bring a worthy change in the real estate sector, have come together to construct this iconic project in the heart of Karachi. With their expertise in the field of construction and their panache for perfection, they are already making waves in the real estate industry.



FEEL THE CHANGE
IN YOUR LIFE!